

# scales of i n h a b i t a t i o n

## ADITI PADHI

AHST 6950

Drawing is the principle locus of conjecture in architecture (Robin Evans). Drawing types evolved in response to the conception of the architectural problem, as architectural design incurs different problems than the making of a naturalized image, architectural drawings exhibits different traits from these other forms of representation. After diagramming the idea of addressing the connections begin to drive the design process. Ranging from a change in scale, going from small to large, to the activation of key points of engagement and interaction, this portfolio records experiments with various 'Scales of Inhabitation.'

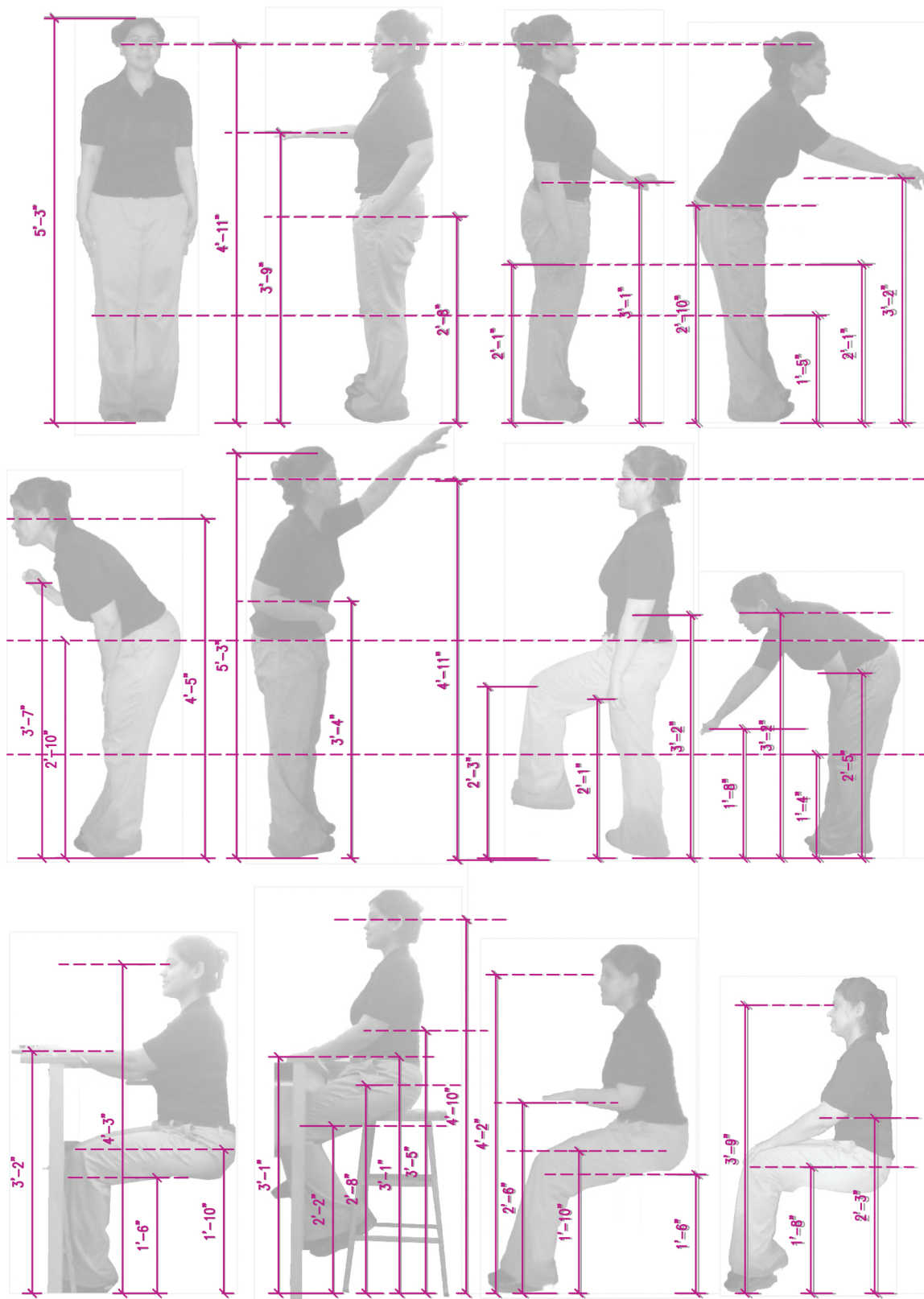
### CONTENT

1. SCALED FIGURES - A STUDY OF HUMAN PROPORTIONS
2. INHABITING OFFICE SPACE
3. INHABITING A WINDOW
4. LIVE-WORK STUDIO APARTMENT
5. GALLERY STAIR
6. INHABITING OUTDOOR SPACE- RICHARDSON MEMORIAL
7. TREME- SEVENTH WARD URBAN CENTRE OUTDOOR SPACE



# scales of inhabitation

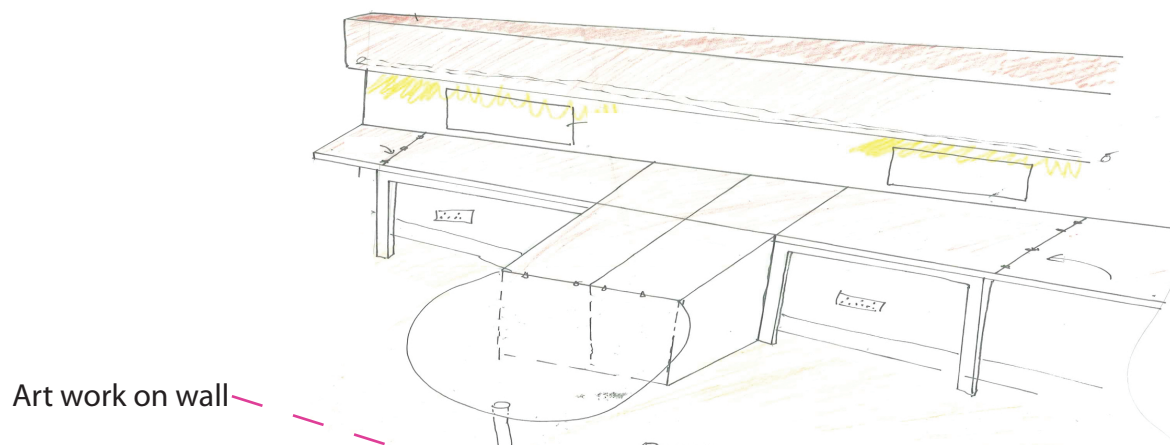
01



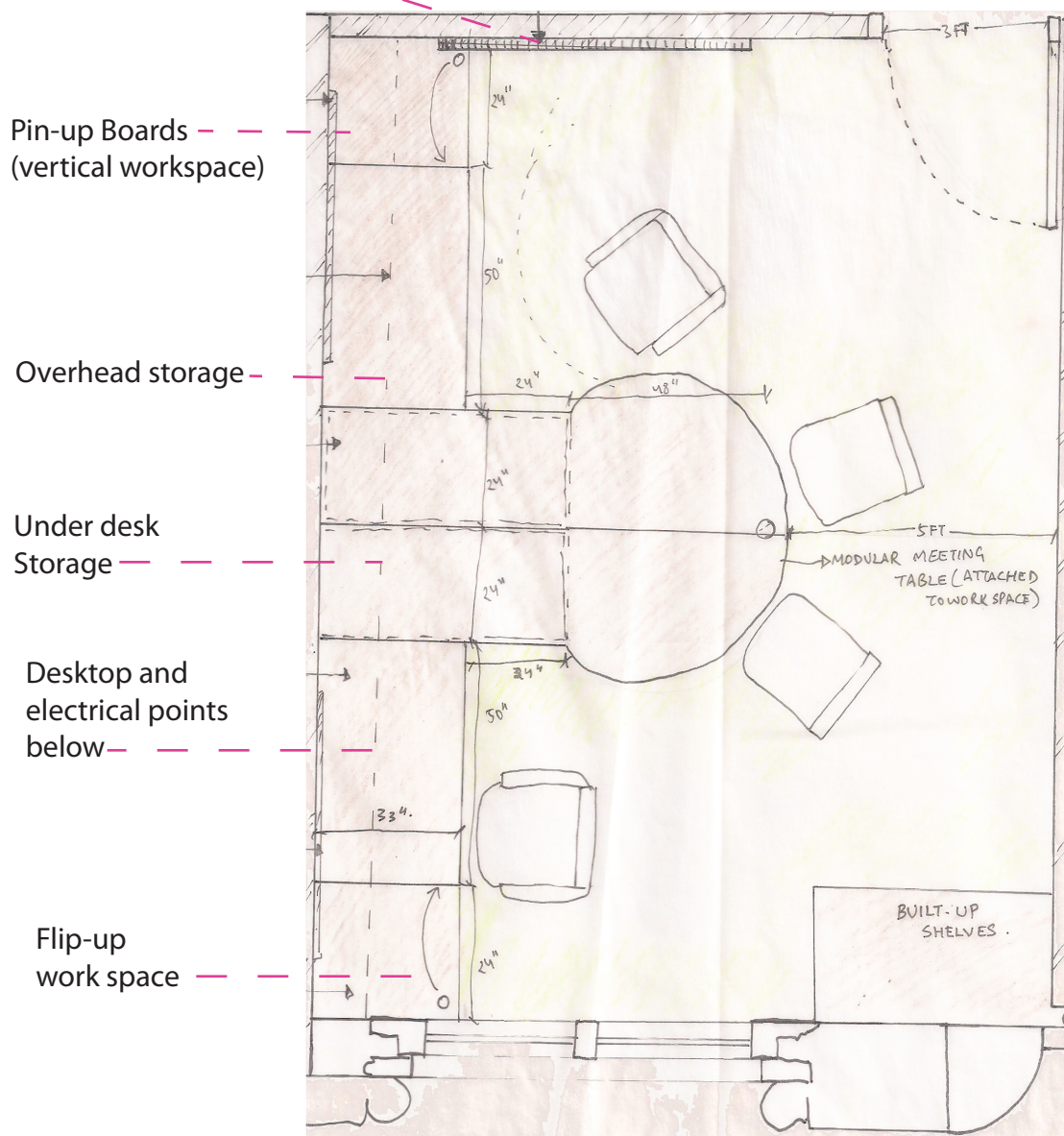
**SCALED FIGURES - A STUDY OF HUMAN PROPORTIONS**

# scales of inhabitation

01

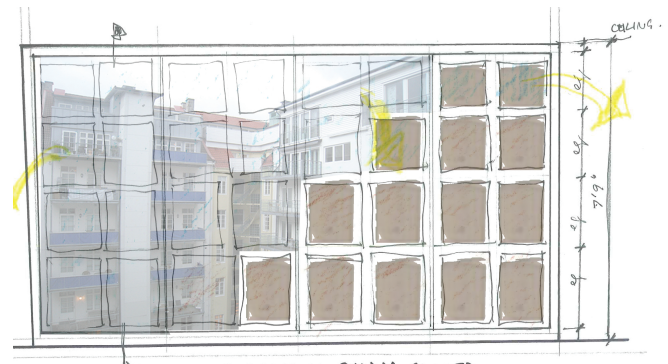
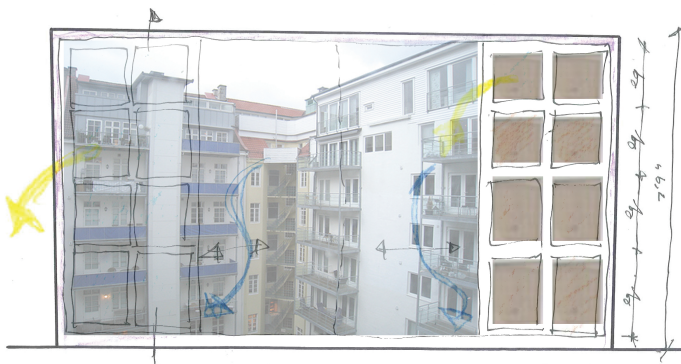
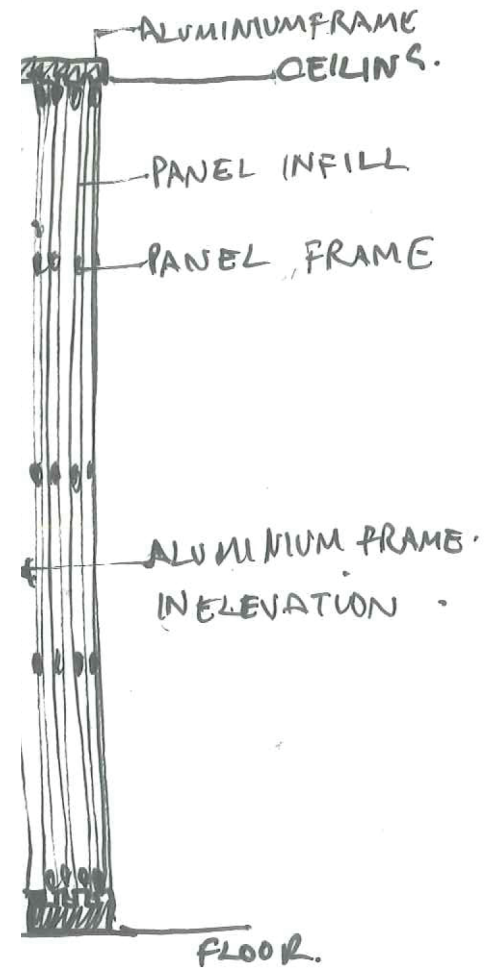
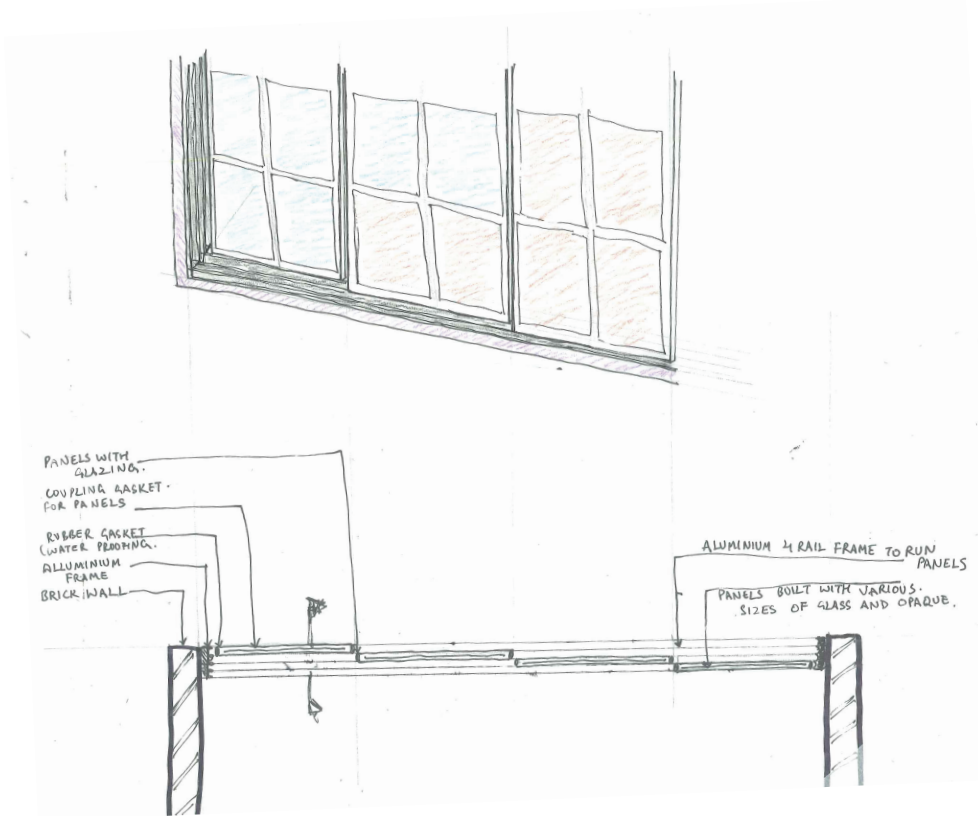


Art work on wall



# scales of inhabitation

03

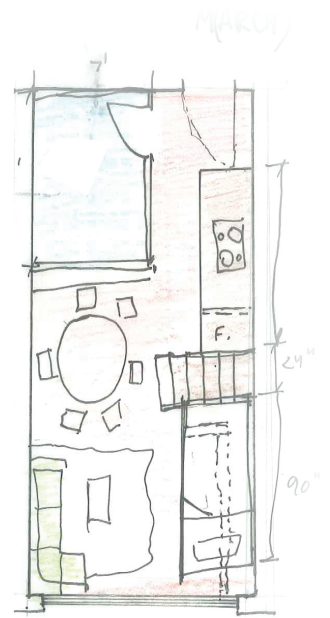
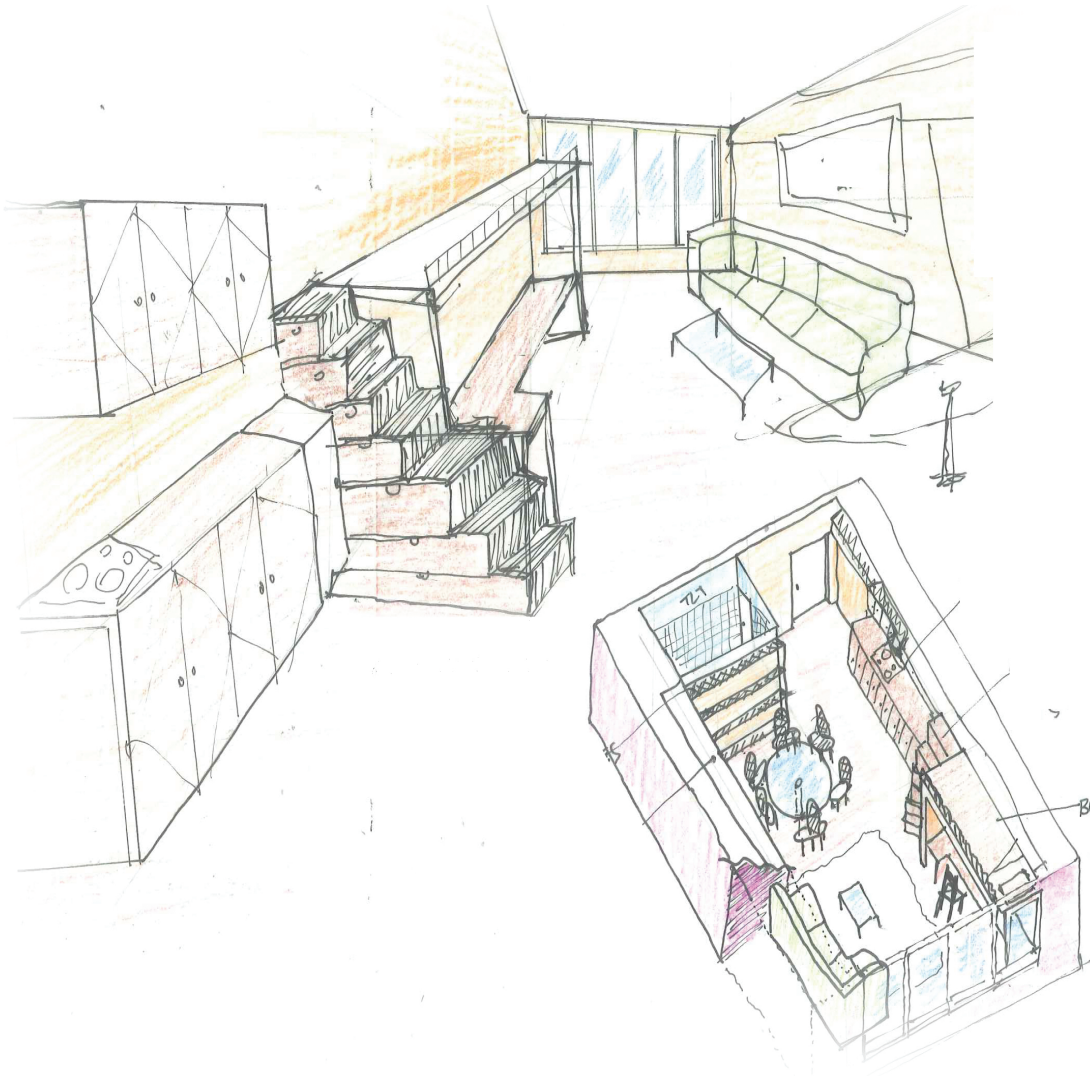


Open/Closed flexible sliding doors that will not interfere with the flooring. It allows control over not only inside-outside view but also light and ventilation. e.g. the shutters open in the morning to allow light and radiant heat to enter the house. In the evening, the insulated shutters are closed, helping to retain the day's heat gain.



# scales of inhabitation

04

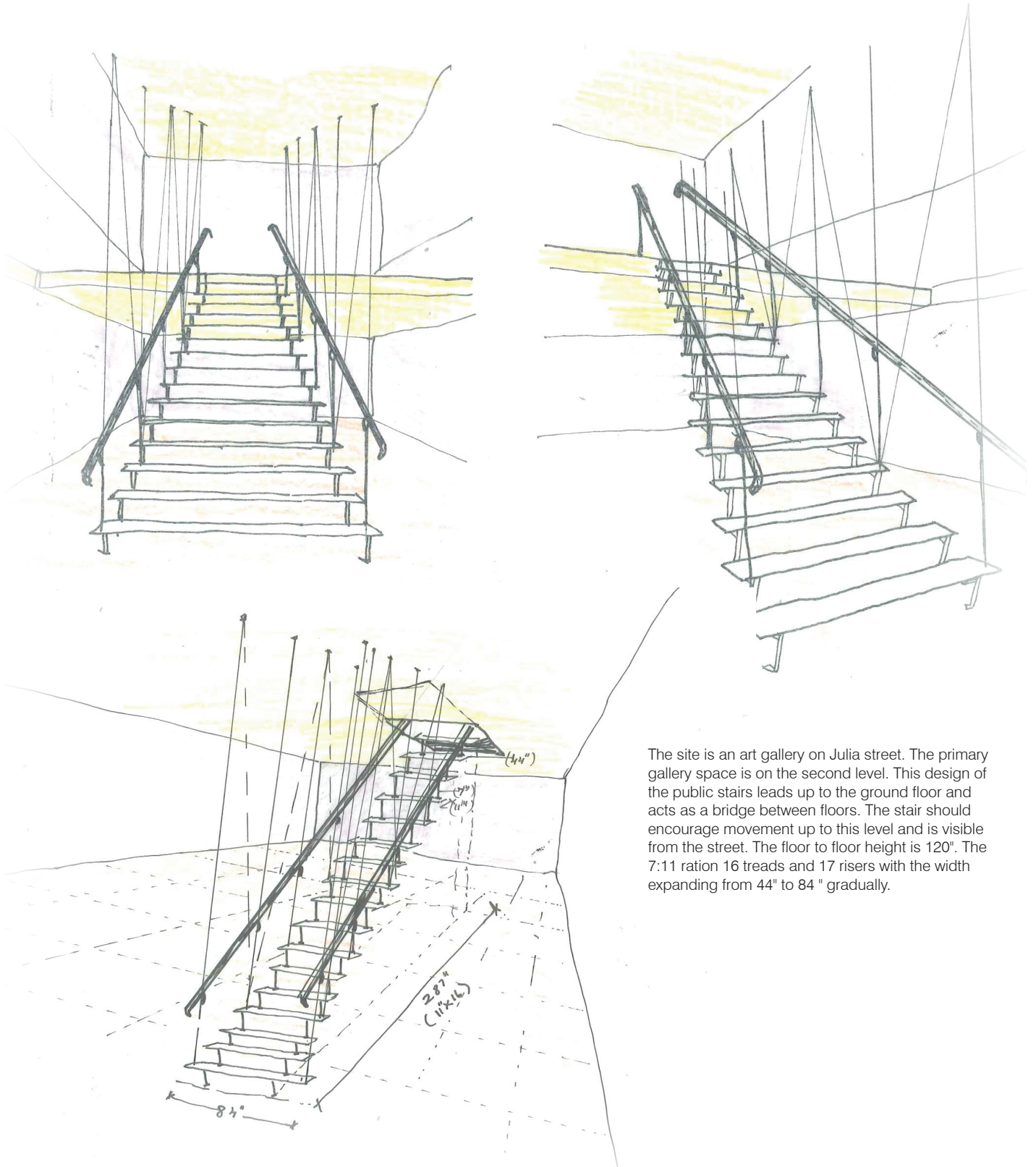


Recognizing both the needs and economies of recent graduates at the early stages of their careers and reflect this in the provision of a Live-Work accommodation, this 30'x16' celebrates the idea of WORKING IN THE 'LIFESPACE'.

**LIVE-WORK STUDIO APARTMENT**

# scales of inhabitation

05



The site is an art gallery on Julia street. The primary gallery space is on the second level. This design of the public stairs leads up to the ground floor and acts as a bridge between floors. The stair should encourage movement up to this level and is visible from the street. The floor to floor height is 120". The 7:11 ration 16 treads and 17 risers with the width expanding from 44" to 84 " gradually.

## GALLERY STAIR



# scales of inhabitation

06



**INHABITING OUTDOOR SPACE-**

# scales of inhabitation

08



Can positive architecture with space, event, movement strategies be used to rehabilitate a community and reduce opportunities for crime? Located at the notorious 'Million Dollar Block' of Treme-Seventh Ward the facilities of an enterprise incubator, vocational training centre and a community performance space is proposed. In tandem, it explores an overlap of cultural infrastructure-building practices in New Orleans, classic safe city design ideals and a shift in the perception of law enforcement world-wide. The over-arching form creates a campus with the existing school. It aligns compositionally to the rhythmic qualities of the Interchange-10 columns and adjacent lot developments. Symbolically bridging over the historic Bayou road and tugging at the cultural developments of the historical neighborhoods, it attempts to address the invisible cultural divide that is the esplanade ridge.

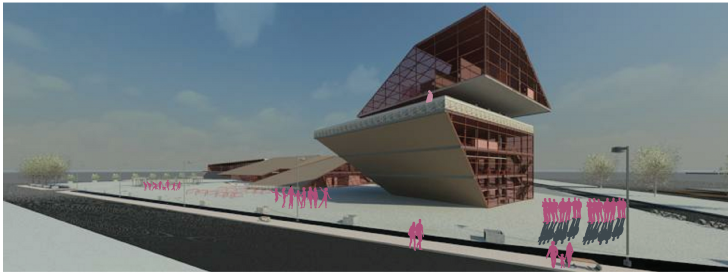
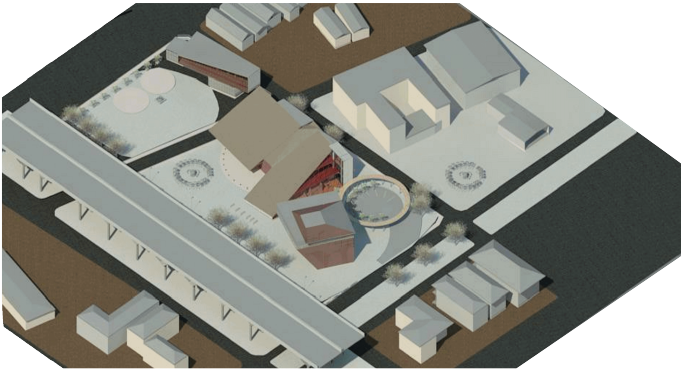


**TREME- SEVENTH WARD URBAN CENTRE INDOOR SPACE**



# scales of inhabitation

09



**TREME- SEVENTH WARD URBAN CENTRE OUTDOOR SPACE**