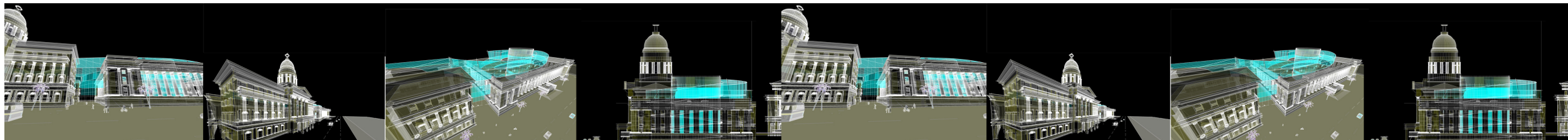


NATIONAL ART GALLERY
ARCHITECTURAL DESIGN COMPETITION



NATIONAL ART GALLERY SINGAPORE

THE CONCEPT: The SINGAPORE OF TODAY has risen above its past and reformed into a dynamic, progressive and adaptive society. Embracing the **GLORIOUS HISTORY** as a natural complement to appreciating our legacy, we have freed ourselves from the cliché.

THE STORY: Located in the civic district at the conjuncture of many urban and socio-cultural incidents; *The National Art Gallery Singapore* presents designers with the unique position to look towards the past as well as the future.

The archival buildings to be refurbished speak of colonial rule, World War 2 and administration, while the newer developments around speak of renaissance, revolution and accomplishments. The site and buildings have hence stood witness to Singapore's ascent from its humble past to its illustrious present.

Since gaining independence, Singapore has transformed itself into an island nation with the highest standard of living in Asia—and the 11th highest in the world. The Singaporean socio-eco-system comprises of a distinctive combination of competencies, based upon its physical and metaphorical location between Western and Eastern potentials. It is an ideal platform for the meeting of global talents, ideas, funds and businesses. Singapore's acceptance of globalization, and its corresponding foreign cultural infusion, has a circuitous effect on the national ethos through the engendering of cosmopolitanism, which in turn stimulates openness. **Modern Singapore is a remarkable phenomenon** and the architectural language of the gallery will **celebrate the chapters of this lionized evolution.**

THE HISTORICAL ISLANDS - The distinguished historical, architectural and cultural backgrounds of the site and the buildings provide an outstanding canvas to bring about the unique transformation of a bureaucratic edifice to the public domain. PMB guided **HISTORICAL ISLANDS** were Identified and abstracted to establish core design intent. While the most important programs were attributed to these spaces, they were treated more as **synchronous chapters existing in 3D space.** The lacuna around was reorganized in an unrepressed fashion to accommodate the new function of the building. The new floor plate was freed from its rudimentary ties with the envelope of the building. While the flow of the spaces was would encompass these historical islands, the functional connectivity of the Old Supreme Court Library, Courts and The Surrender Chamber was the basic formulae for circulation. The level difference between the historical islands suggested a unique solution of an **all-entwining ramp.**

PLANS - The plan is organized such that the entry to the Gallery spaces would be through the restored entry to the Former Supreme court, while the entry for curatorial, educational and corporate areas would be through the restored entry of the City Hall. The gallery spaces are interconnected in a unidirectional anticlockwise flow between the two buildings and ascend from the ground level in the form of a **elliptical spire, symbolically growing towards an infinite future yet embracing its past in its midst.** The elliptical ramp changes its dimensions and spatial quality to accommodate for the various changing exhibitions. The gallery spaces further advances to accommodate the educational facilities, corporate facilities and functionally cease at the New Art Institute Library atop The Surrender Chamber that accommodates the New Auditorium function. Souvenir and art shops are clubbed directly below this historical island and form the core orientation for the **central elliptical courtyard.**

The Skewing Ellipse: The central elliptical courtyard skews along its axis as the elliptical ramp rises to create interesting exhibition spaces that change on every floor while also allowing for visual contact between the various spaces at three different points in the building. The courtyard quality is still maintained while new dynamism is introduced to its definition and function. A temporary gallery space is incorporated at the basement level with views from almost all spaces of the building. The elliptical form of the ramp and courtyard allows for permeability, visibility and symbolical freedom from the old building envelope.

The Historical tour- The tour that incorporates the historic walk of the prisoners through the floating corridor, and entry into the courtrooms through the trap doors in the floor will be organized into guided tours to add uniqueness to the story telling of the historical islands. The area below this would accommodate services, and kitchens for the various restaurants.

The retail spaces are organized in the basement and ground levels and provided with connectivity with the nearby public spaces of the esplanade, MRT stations and the central business district. The area between the two buildings is treated as **primary public realm** and has the independence of functioning after gallery hours as a source of activity and income for the institute. The public space manifests itself as a curved form that connects not only architecturally but also functionally the two distinct buildings.

THE RAMP – Rising up a spire

The Ramp spire is a metaphor for Restoring the spiritual peak of the city, creating an icon that speaks to our vitality in the face of danger and our optimism in the aftermath of tragedy and our eventual success in all that we aspire to do.

DUALITY AND EXHIBITION PROGRAMME

The development of art in Asia occurs on two levels - cultural and spiritual. The artistic growth of Asia is also a function of its spiritual growth.

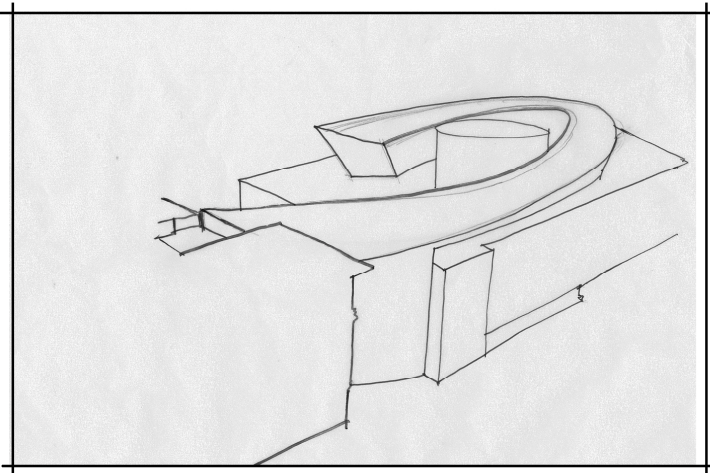
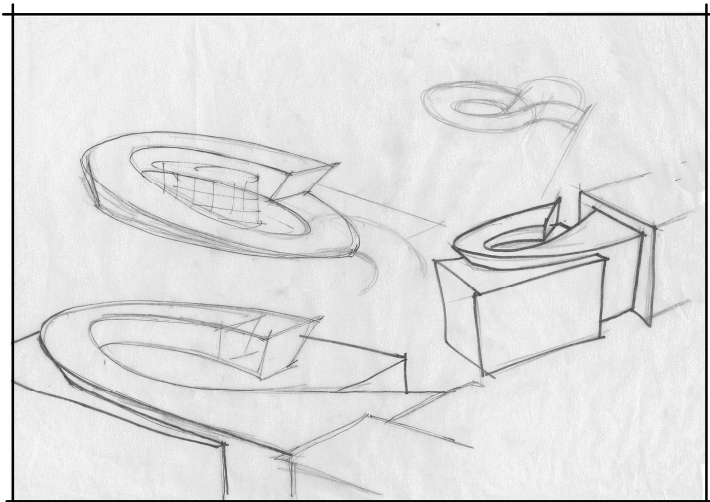
The gallery spatial quality embodies a desire to engage in dialogue with the visitors through its many different approaches to **UNCOVER, REFLECT, CRITIQUE, AESTHETICISE AND INTERPRET ART** TODAY.

Understanding Asian Art:

Because of its unique mental schema, form, and philosophy, Asian art was initially dismissed as sub-standard by the Occidental world. However, as geographical and cultural barriers were peeled away, a universal pattern connecting the art of the east with that of the west was revealed. Among these unique characteristics is the importance of compositional spacing in uniting shape and proportion, the use of defining line, and the use of color and light to express artistic arrangements. Together, these traits are found in all art but there are unique characteristics that help define Asian art.

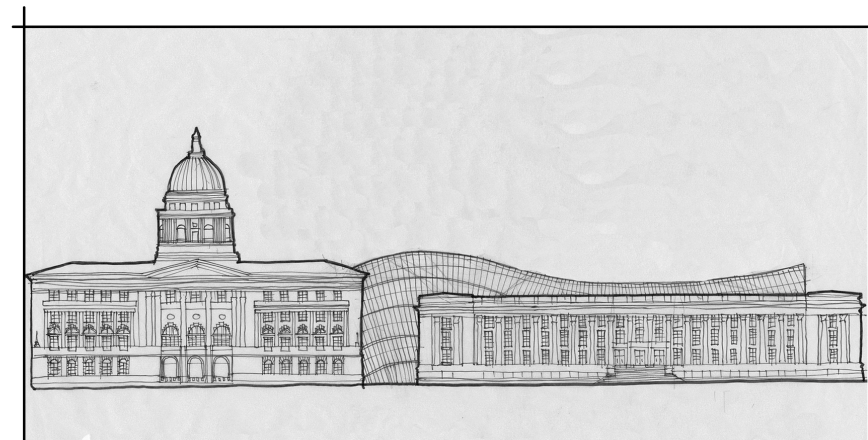
The two volumes of the two different buildings are intended to make an integrated whole while reinforcing its dual functionality: one accommodating the galleries and the other the educational facilities.

Areas	
RETAIL SPACE	7274 Sqm
EXHIBITION AREAS	20,260 Sqm
EDUCATIONAL AREAS	1604 Sqm
ACADEMIC AND RESEARCH AREAS	1792 Sqm
CURATORIAL / ADMIN SPACES	1722 Sqm
CORPORATE / MEMEBERS AREA	1070 Sqm
SERVICE AREAS AND NON PUBLIC CIRCULATION	6126 Sqm
PUBLIC NON EXHIBITION AREAS	5946 Sqm
TOTAL GFA	45,794 Sqm
EXISTING GFA	40,662 Sqm

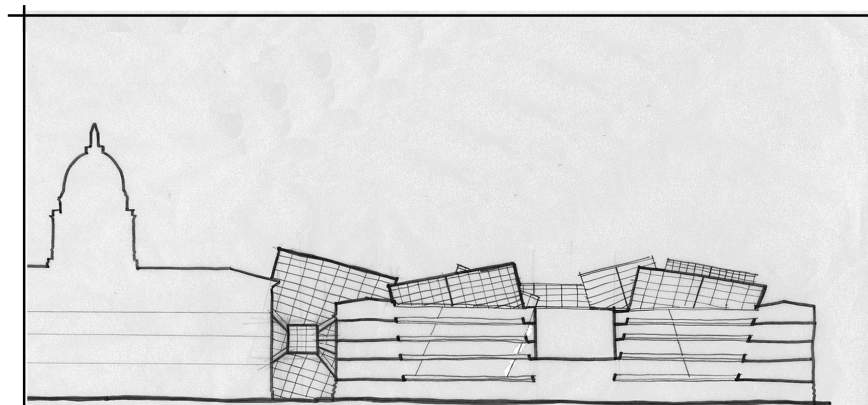


Eventually the final design was that of a swooping curve that breaks away from the existing form, and reaches to the sky, symbolically reaching out to infinite possibilities.

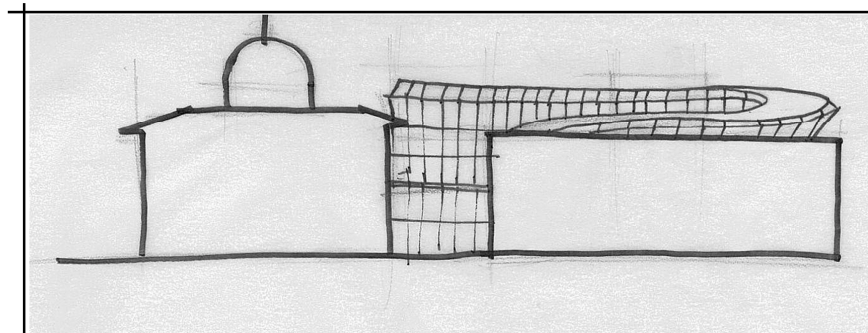
Development of Exterior Forms



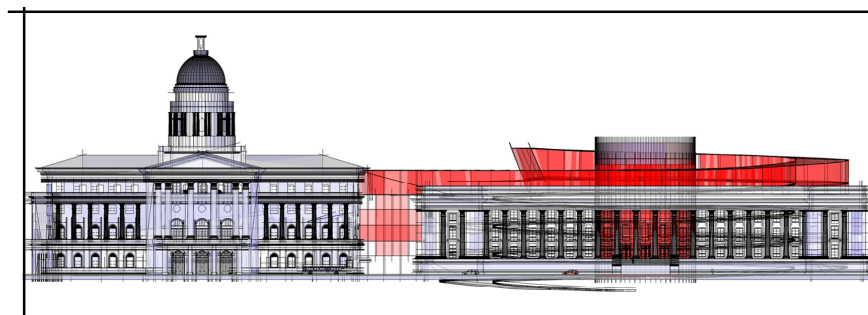
An initial study showing a fluid form, as a contrast to the existing rigid structure. The proposed curved form symbolizes modern ideals that are still rooted in history.

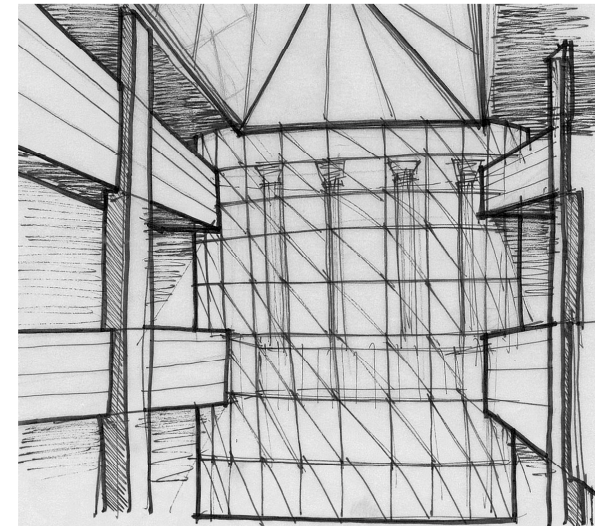
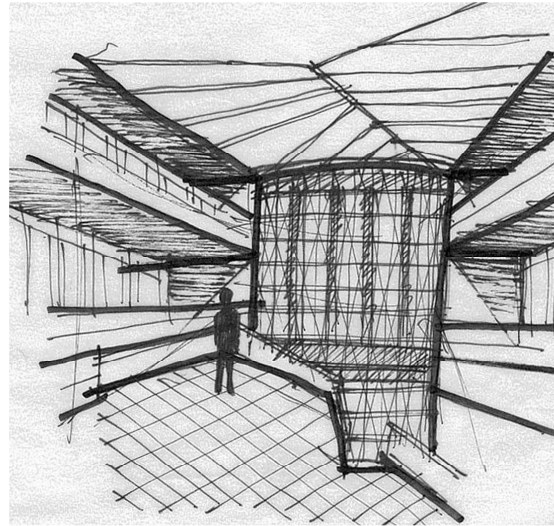
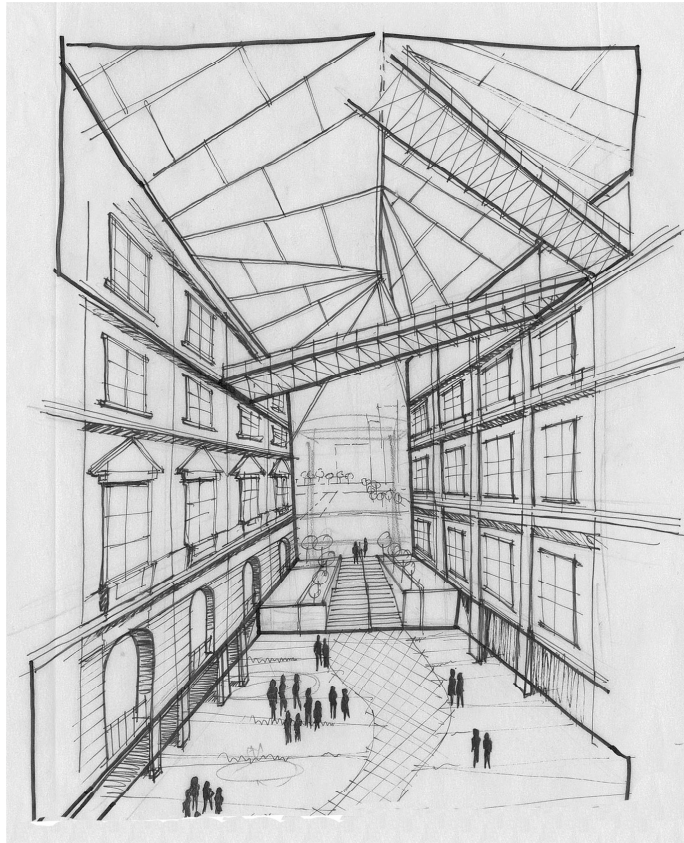


As another symbol of contrasting between past, present and future, These geometric forms were introduced, showing a modern concept of design. The forms break away from the confines of the past, seemingly reaching out to the sky.

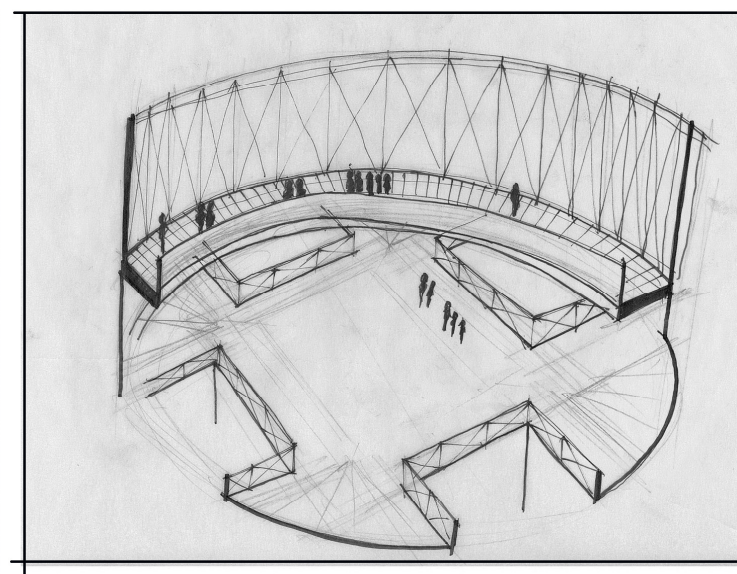
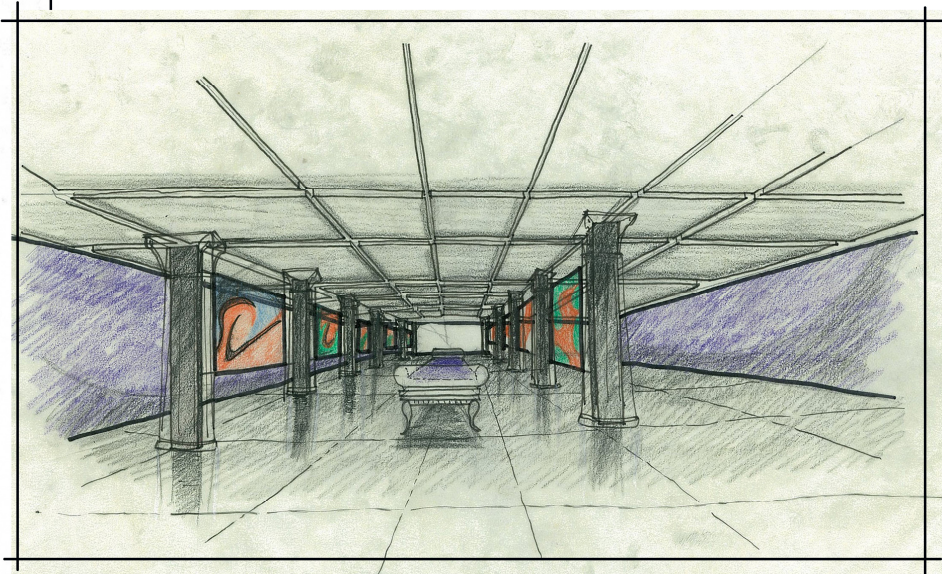
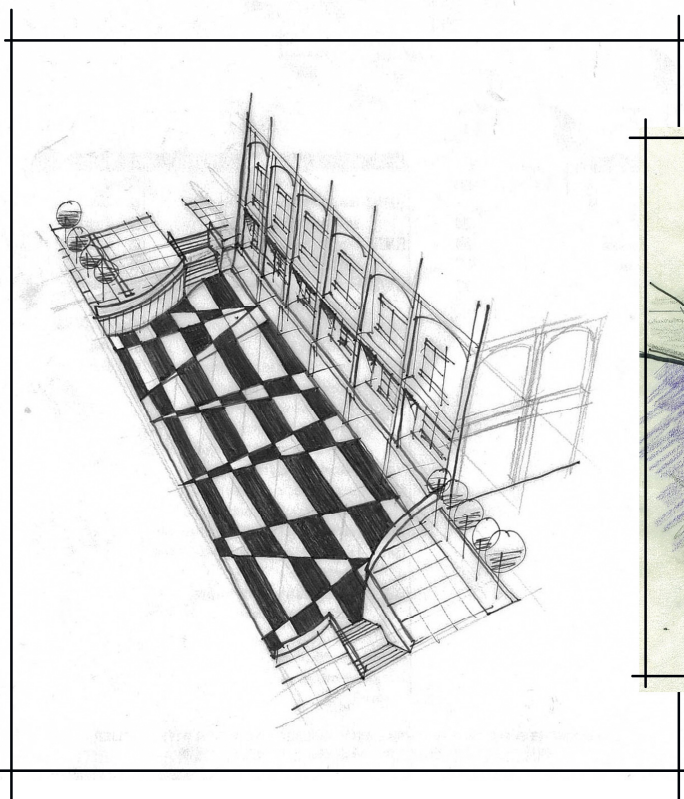


The design direction eventually ended up in a curvilinear form, one which makes its way through the building, and breaks out at the top moving in an upward motion towards the sky, symbolizing its progress from the past.



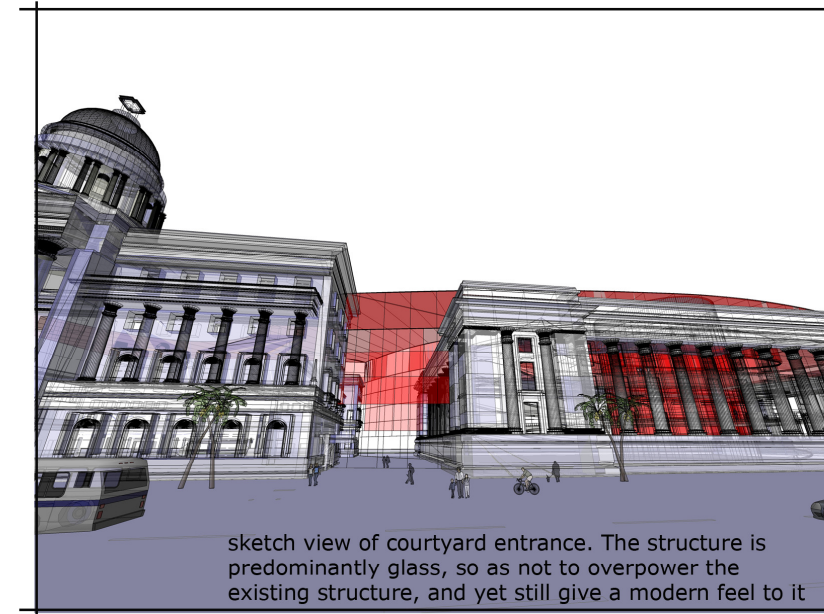


The design direction eventually ended up in a curvilinear form, one which makes its way through the building, and breaks out at the top moving in an upward motion towards the sky, symbolizing its progress from the past.



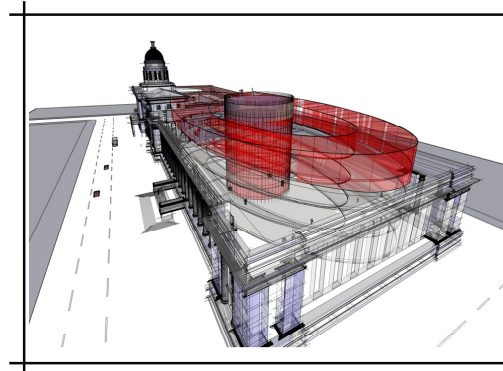
Development of Interior Concepts

Aerial perspective view showing the spiral glass roof breaking out of the structure and moving into the future, as it still embraces the past...



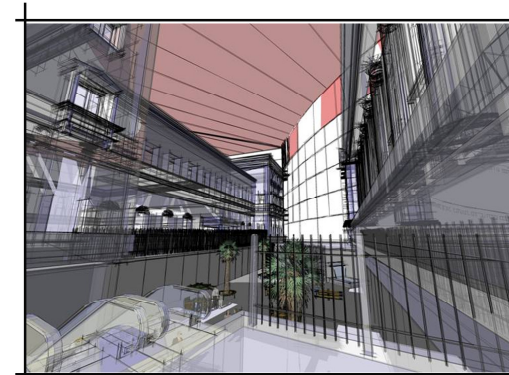
sketch view of courtyard entrance. The structure is predominantly glass, so as not to overpower the existing structure, and yet still give a modern feel to it

aerial sketch view showing the curved roof, a contrast to the rectilinear structure



Perspective view from the padang
The proposed structure is not too elaborate so as not to overpower the strong classical design and identity of the existing structure

view inside the courtyard looking at the lower basement commercial level



Development of Exterior Forms